

How to Set up Fibreoptic Bronchoscopes

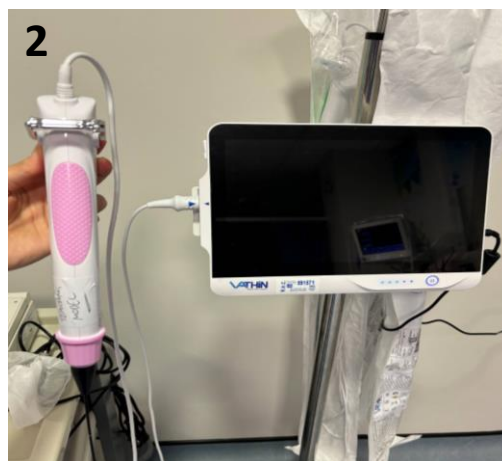
Setting up the 2.2mm Vathin™ “Neonatal” Fibrescope



Vathin™
screen
and scope

Difficult
Airway
Trolley

The Vathin™ screen and scope are kept together next to the Difficult Airway Trolley and C-MAC monitor.



The collar of the 2.2mm fibrescope is pink/white.

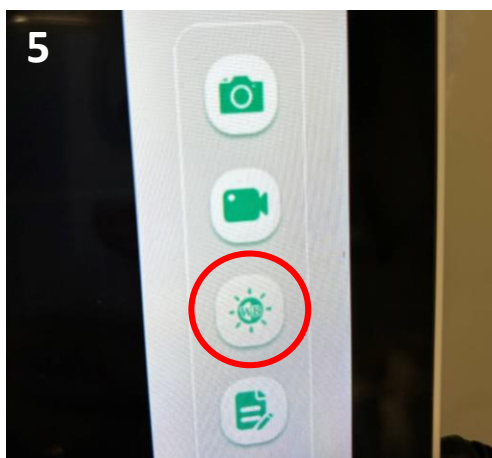


Power
Button

Turn on monitor using a long press of the power button.



Follow the visual guide on-screen and plug the scope in, lining up the arrows as pictured.



Press this flashing button to perform white balance. The side of scope handle works as a white surface.



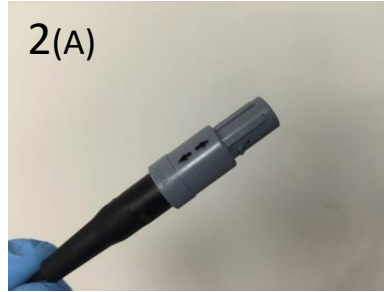
The scope is now ready to use.

Setting up the 2.8mm Storz™ Fibrescope with the Storz™ C-MAC



1

To use the Storz™ 2.8mm fibrescope, you will need this camera unit, stored in the basket of the C-MAC



2(A)



2(B)

This is the connector (A) on the camera unit which inserts into the left hand side of the C-MAC monitor (B)



3A

The Storz™ 2.8mm fibrescope needs this external "Luxtec" light source, stored next to the C-MAC in theatre recovery. This requires to be plugged in; it has no internal battery



3B

The black, circular dock on the light source must be rotated to accept the "Storz" light cable



3C

This is how the light cable screws onto to the 2.8mm fibrescope. The dimmer switch on the light source can be used to help reduce glare



4

Rotate collar to unlock / lock

The camera unit attaches to the eyepiece of the fibrescope. The collar of the camera unit must be rotated to unlock before attaching



5

ON / OFF

The system is turned on and off using the button at the top right of the screen. It takes approx. 6 seconds for the screen to power up

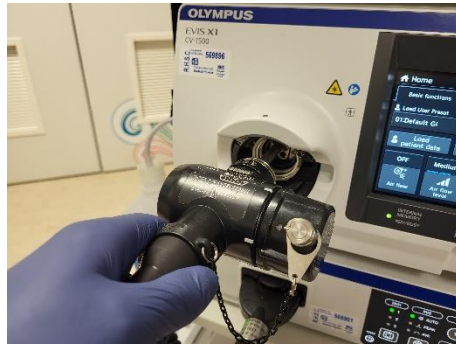
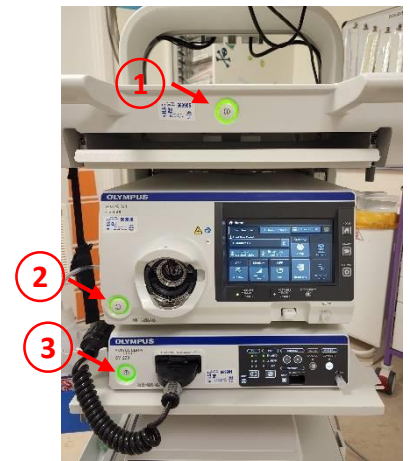
Setting up the 2.8mm Olympus Bronchoscope With the Lucera Stack



To use the Storz™ 2.8mm bronchoscope, you will need one of either the respiratory or GI Lucera stacks.



In order for the stack to function, all 3 of these power buttons must be switched on. When they are all “on”, they will light up.



There is only one cable on this bronchoscope, and slots in here on this module.



Once the main cable is plugged in, the protective cap on the right needs twisted anti-clockwise and removed.



The next step is to plug the module into the bronchoscope attachment. This is the plug you need and it should already be on the stack as shown.



Line up the dot on the plug with the white line on the bronchoscope attachment.



Rotate clockwise and the cable should slot into place with a soft click.

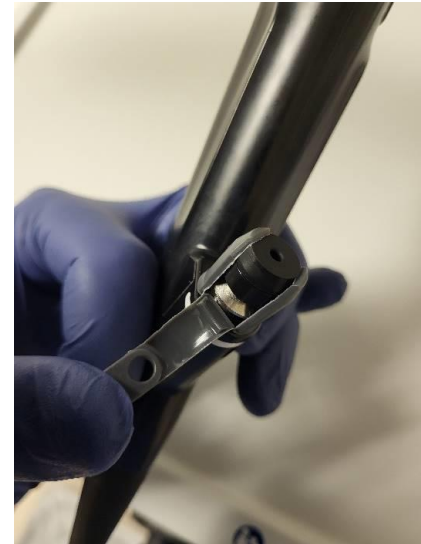


It sometimes happens automatically, but if you need to “white balance”, it can be done from this screen on the stack.

Setting up Suction for the 2.8mm Olympus Bronchoscope



In order to use the suction channel on the 2.8mm Olympus bronchoscope you will need a single use suction valve (MAJ-209) and a single use biopsy valve (MAJ-210). These are found on the roll-front storage shelves that are situated outside Interventional Radiology. See pictures above



The single use biopsy valve is required to block the working channel, otherwise you will not be able to generate suction.

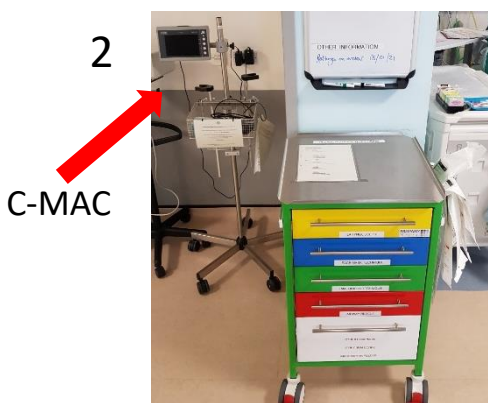
The suction valve attaches here.

To remove the single use biopsy valve, there is a peel-away strip as shown here.

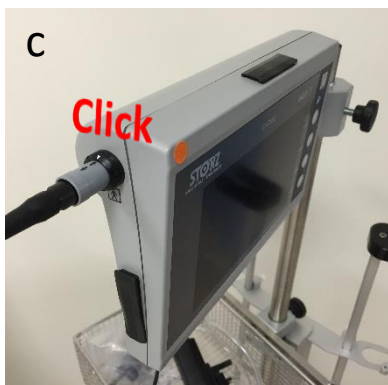
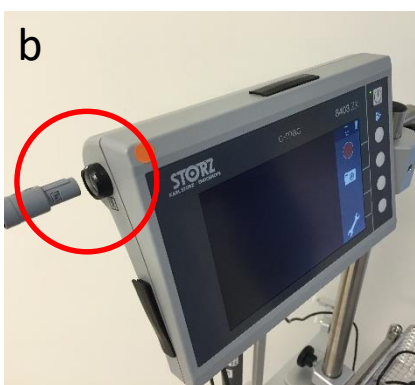
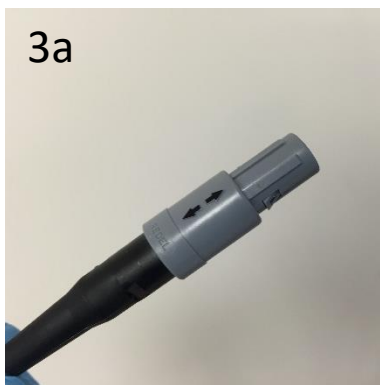
Setting up the Storz™ 4.0mm Digital Fibrescope with the Storz™ C-MAC



1
The Storz™ C-MAC system is a portable video display unit for use with the intubating fibrescopes. When not in use it should be plugged in.



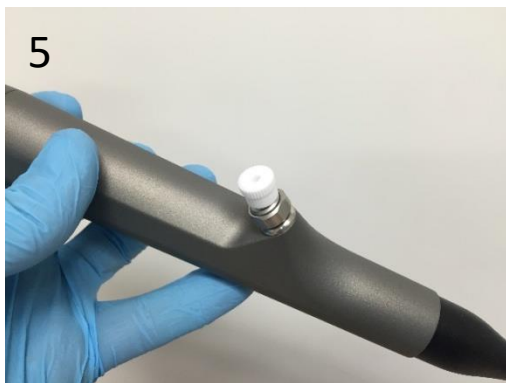
2
C-MAC
The system is kept in recovery alongside the Cardiac Arrest Trolley and the Difficult Airway Trolley



3a b c
The Storz™ 4.0mm digital fibrescope has a single cable (a) which connects on the left side of the screen (b,c). This single cable means that no separate light source is required.



4
ON/OFF
The system is turned on and off using the button at the top right of the screen. It takes approximately 6 seconds for the screen to power up



5
If suction is required, the working channel needs to be occluded. A luer-lock bung will suffice.

Setting up the 4.1mm Olympus™ Fibrescope with the Storz C-MAC

1



To use the Olympus™ 4.1mm fibrescope, you will need this camera unit, stored in the basket of the C-MAC

2



This is the connector on the camera unit which inserts into the C-MAC

3



The camera unit connector inserts here, to the left hand side of the screen

4



The Olympus™ 4.1mm fibrescope needs a separate battery-powered light source, kept in the basket of the C-MAC stand. It attaches like this and is turned on using the button on the light source

5



The camera unit attaches to the eyepiece of the fibrescope. The collar of the camera unit must be rotated to unlock before attaching

6



The system is turned on and off using the button at the top right of the screen. It takes approx. 6 seconds for the screen to power up. The light source must also be turned on.